

# WD High Output Waterproof LED Light

Patent  
New Type M413077  
New Type M439150

**NEW**



**Made In Taiwan**



Features

- Water, oil and dust-tight according to IP67.
- Hard anodized aluminum housing provides an excellent heat conductivity that prevents the light from fading.
- The LED uses state-of-the-art technology is impervious to shock and vibration, also the high output and low power consumption creates an environmentally friendly green product.
- The flat housing design with tempered glass, WD series are anti-impact and of great help for solving the problem of the circular glass lampshade breakage caused by impact, for example, fluorescent lamp.
- Thanks to the high LED technologies and intensive illumination, WD122 reaches to 700 lx with 2M distance and gives an excellent lighting to a higher space.
- The multiple design fulfills a variety of application, the thin wide housing extends the range of illumination; 40° and 60° beam angle and sophisticated optics creates great intensive brightness; 120° flat beam for illuminating a large area.
- Optional bracket offers 180° rotating angle for adjusting to the best illumination direction.

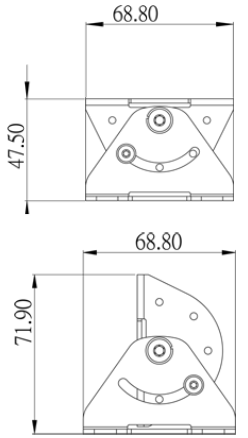
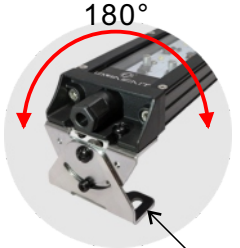
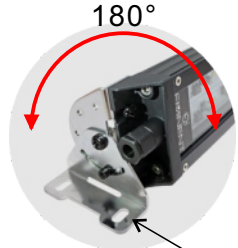
Accessory Features (Option)

**A: Rotatable bracket**



▶ Fastened rotatable bracket up vertically, or swiveled it to the appropriate direction and fixed..

▶ Using inward rotatable bracket to fit the lamp into the confined space solved the problem of space limitation.



Angle fasten hole

Outward assembly

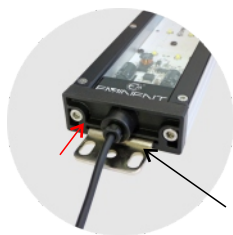
Inward assembly

## B: Flat bracket

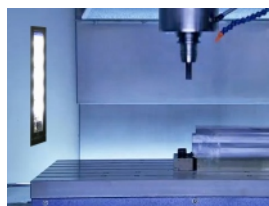


(Model : Z028)

- ▶ Embedded the lamp into the original designed position by using the flat bracket, the lamp and space blended with each other into unity and appeared fashionably elegant perfectly.



Insert flat bracket into the slot



## C: Cable gland shroud



(Model : P07)

- ▶ Choosing cable gland shroud for waterproof and oil-resistant enabled it to protect the cable efficiently.

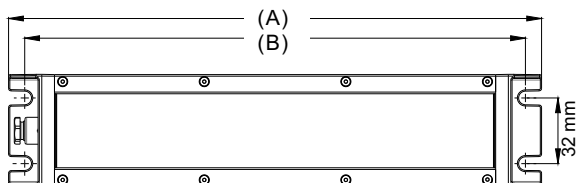


## Fasten Hole Distance & Diagram

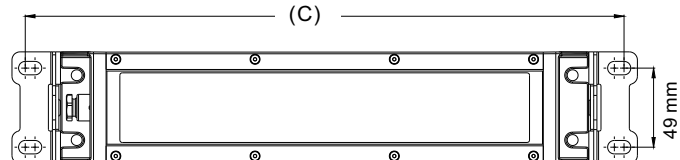
Model No.	Length(A)	Screw/Standard (B)	Rotatable Bracket Outward Direction (C)	Rotatable Bracket Inward Direction (D)	Flat Bracket(E)
WD42	185	170	220	170	175
WD62	325	310	360	310	315
WD122	575	560	610	560	565
WD28	185	170	220	170	175
WD32	325	310	360	310	315
WD47	475	460	510	460	465

Unit: mm

### Standard fasten



### Rotatable bracket outward fasten

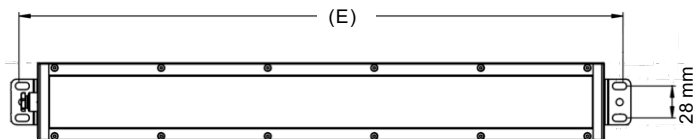


### Rotatable bracket inward fasten

(Backside vertical view)



### Flat bracket fasten



## Model/Specification

Model No.		Specification						
Voltage 24V AC/DC	Voltage AC100V~240V	Power	Angle	Color	CCT(K)	IP	Size L*W*H(mm)	Weight(g)
WD42-424	WD42-4X	10W	40°	White	5000	IP673	185*69*26	400g
WD42-624	WD42-6X	10W	60°	White	5000	IP673	185*69*26	400g
WD62-424	WD62-4X	20W	40°	White	5000	IP673	325*69*26	750g
WD62-624	WD62-6X	20W	60°	White	5000	IP673	325*69*26	750g
WD122-424	WD122-4X	40W	40°	White	5000	IP673	575*69*26	1350g
WD122-624	WD122-6X	40W	60°	White	5000	IP673	575*69*26	1350g
WD28-24	WD28-X	10W	120°	White	5000	IP673	325*69*26	750g
WD32-24	WD32-X	20W	120°	White	5000	IP673	325*69*26	750g
WD47-24	WD47-X	30W	120°	White	5000	IP673	475*69*26	1000g



**EMINENT MAIN**  
INDUSTRIAL CO., LTD.

No.122, Yonglong Rd., Dali Dist., Taichung City 41257 Taiwan R.O.C.  
Tel:+886-4-24075805 Fax:+886-4-24075806  
http:www.eminent.com.tw e-mail:eminentm@ms53.hinet.net