

DSH Medical LED Work Lamp

**Made
In
Taiwan**

◆ Heat convection design of lamp head provides quick heat dissipation for preventing the light from fade effectively.

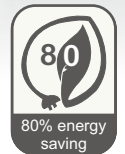
◆ High rigidity and impact-resistant engineering plastic; anodized Aluminum and tempered safety glass made a very durable lamp.

◆ Adjustable torque joint provides powerful capability for the joint.

◆ High quality LED bulb offers high illumination, but low power consumption, it brings you an environmentally friendly green product.

◆ No UV nor IR in spectrum. No heat, no radiation, LED light source is good for health.

◆ Setting handle on lamp head provides excellent flexibility and maneuverability. It has been extensively used in hospital.








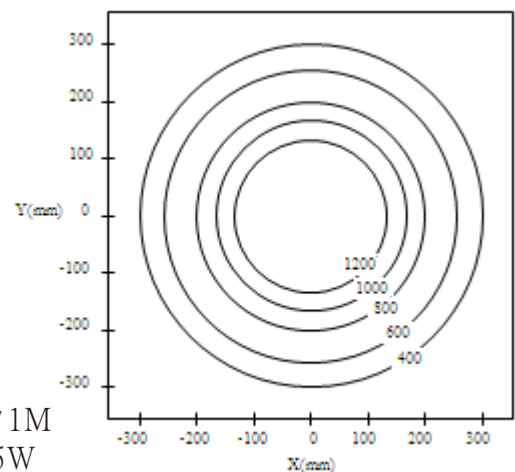
◆ Base joint is made of Aluminum to enhance the capability of base.

Model / Specification

Voltage 12V AC/DC	Voltage 24V AC/DC	Voltage AC100~240V	Length L1* L2(m m)
Model No.			
DSH 11-12	DSH 11-24	DSH 11-X	220*220
DSH 22-12	DSH 22-24	DSH 22-X	280*280
DSH 33-12	DSH 33-24	DSH 33-X	380*380

Accessory(Optional)

		
	Wall Bracket	Clamp
		
	Magnetic Base	Table Base



DSH / 1M
12V/5W



EMINENT MAIN INDUSTRIAL CO., LTD.
www.eminent.com.tw

No.122, Yonglong Rd., Dali Dist., Taichung City 41257 Taiwan R.O.C.
Tel:+886-4-24075805 Fax:+886-4-24075806
E-mail: eminentm@ms53.hinet.net